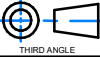

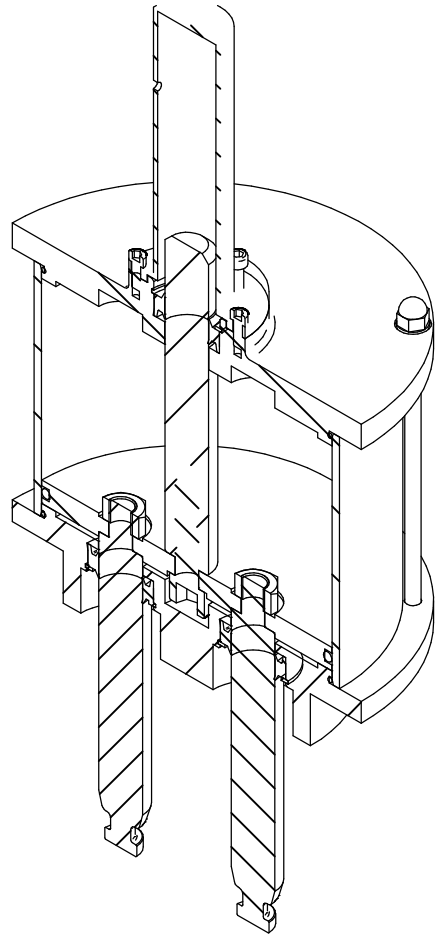
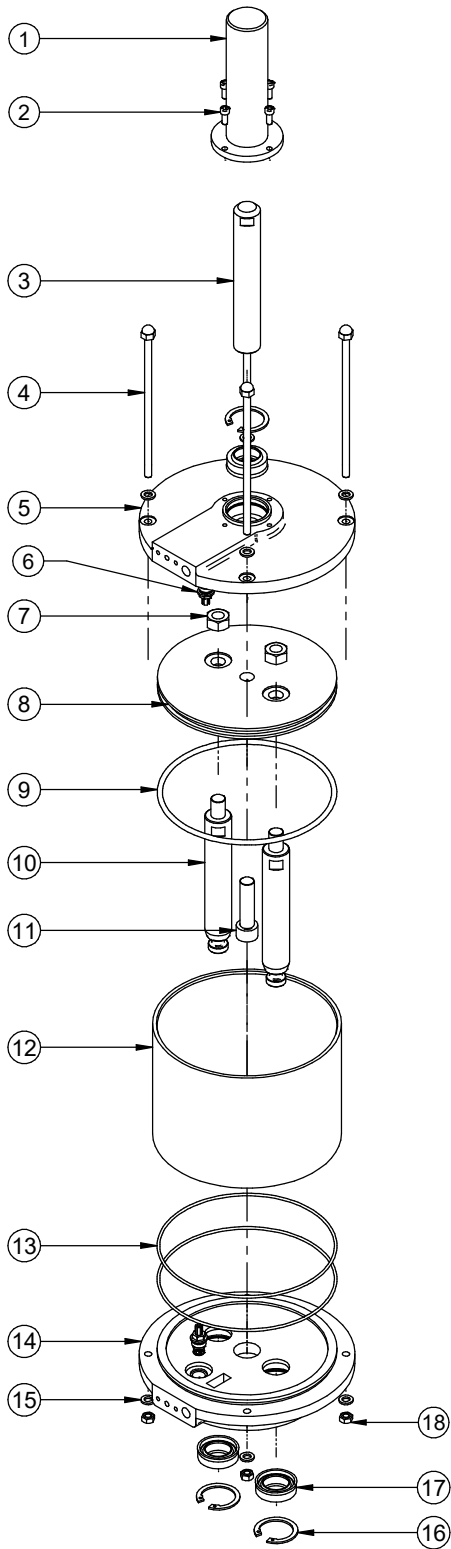


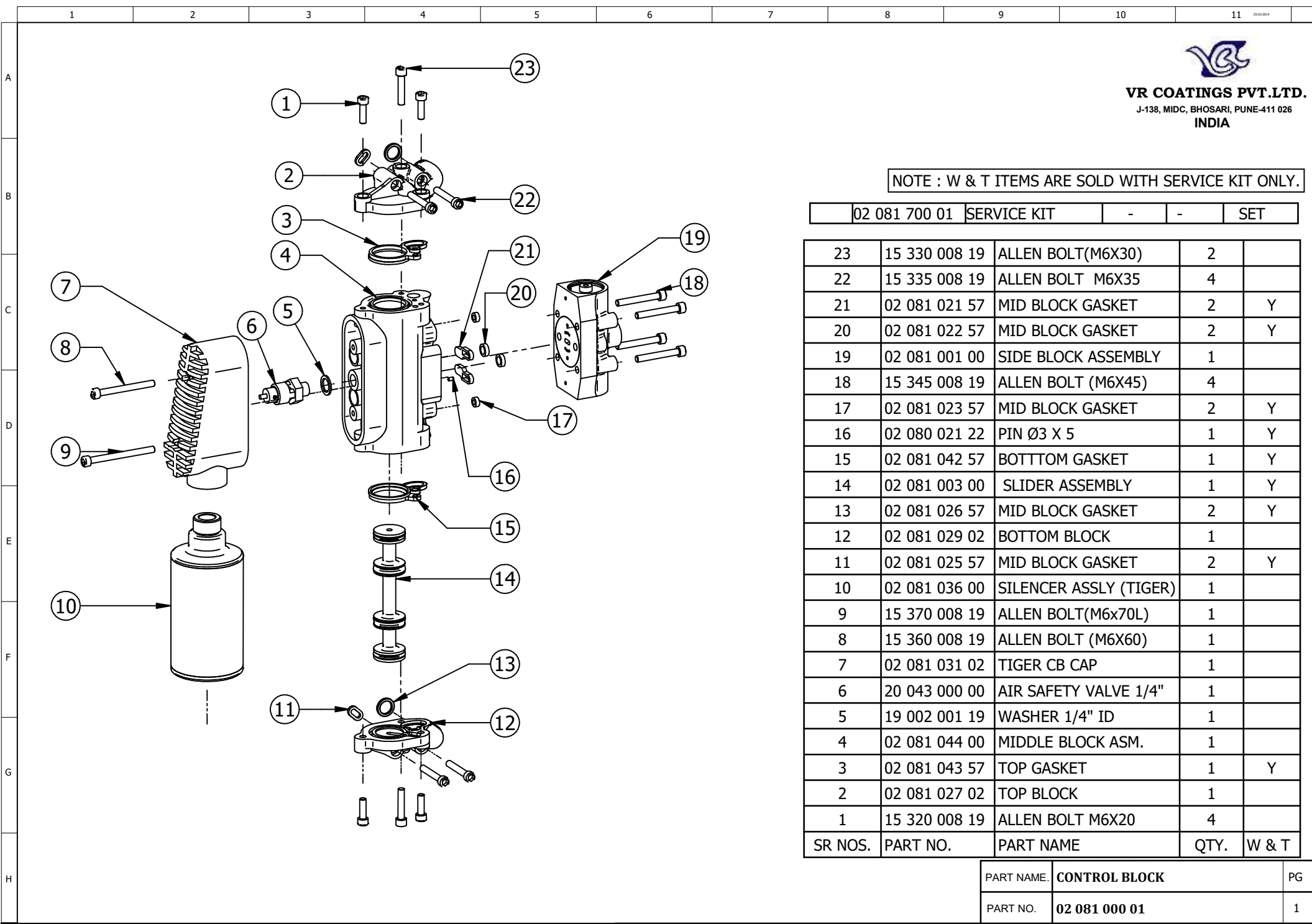
8	17 019 136 00	HYD. 70X2	1	
7	15 210 014 19	NUT M10	4	
6	19 002 014 19N	WASHER M10	4	
5	17 019 140 17	TIE ROD	4	
4	17 019 141 07	MOUNTING PLATE	1	
3	09 001 000 00(NEW)	COUPLING ASSEMBLY	2	
2	02 081 000 01	CONTROL BLOCK	1	
1	17 200 000 00	AIR MOTOR200 S120	1	
SR.NO.	PART NUMBER	PART NAME	QTY.	W&T
<b>BILL OF MATERIAL</b>				

COPY OF DWG ISSUED TO:		DATE:		
MATERIAL DESCRIPTION		NOTE / REFERENCE DWG NO: <b>2K Ø200/70X70CC PRESSURE RATIO 50.1</b>		
AREA IN SQ mm	SPECIAL PROCESS:			
WEIGHT IN KGS	0.000 kg	 THIRD ANGLE	ALL DIMN. ARE IN MM UNLESS OTHERWISE STATED. FOR OPEN TOLERANCE AND SURFACE ROUGHNESS SEE STANDARD CHART DD-01/CH-01. REMOVE SHARP CORNERS. INCASE OF DOUBT ASK.	
RAW MATERIAL	SURFACE PROTECTION AS PER QUALITY MANUAL (QC-01/QP-02)			
<b>VR COATINGS PVT.LTD.</b>  J-138, MIDC, BHOSARI, PUNE-411 026 INDIA		DRN. CKD. APPD. SIGN: ROHIT, RAJIV, RICHARD SCALE: NTS	PART NAME: <b>2k WITH 70X2</b> PART NO: <b>17 019 135 00</b>	PG: 1



18	15 210 009 19	NYLOCK NUT M8	4	
17	01 110 018 57	AIR SEAL	3	Y
16	01 110 022 19	CIRCLIP	3	
15	19 002 009 07	WASHER M8	8	
14	17 200 001 01	BOTTOM CASTING	1	
13	01 200 005 25	O RING (ID-194 X C/S-3)	2	Y
12	01 200 003 01	CYLINDER	1	
11	15 360 017 07	BOLT M16X60	1	
10	17 200 003 19	PISTON ROD	2	
9	01 200 006 25	O RING (ID-188 X C/S-5.8)	1	Y
8	17 200 005 01	PISTON DISC	1	
7	01 110 012 19	NUT M16	2	
6	61 110 008 00	SENSING VALVE	2	Y
5	17 200 002 01	TOP CASTING	1	
4	01 200 007 19	STUD	4	
3	17 200 004 19	TOP PISTON	1	
2	15 315 008 19	ALLEN BOLT M6X15	4	
1	17 200 009 19	TOP CAP	1	
-	17 200 700 00	SERVICE KIT	SET	Y
SR NO	PART NO	PART NAME	QTY	W&T

RAW MATERIAL DESCRIPTION		NOTE:				
SIZE		ALL DIMN. ARE IN MM UNLESS OTHERWISE STATED. FOR OPEN TOLERANCE AND SURFACE ROUGHNESS SEE STANDARD CHART DD-01/CH-01. REMOVE SHARP CORNERS. IN CASE OF DOUBT ASK.				
LENGTH						
MAT.						
VR COATINGS PVT.LTD. J-138, MIDC, BHOSARI, PUNE-411 026 INDIA		DRN	CKD	APPD	PART NAME	AIR MOTOR200 S120
		SIGN	ROKIT	RAJIV	REHAB	PART NO.
		DATE				
		SCALE	NOT TO SCALE			



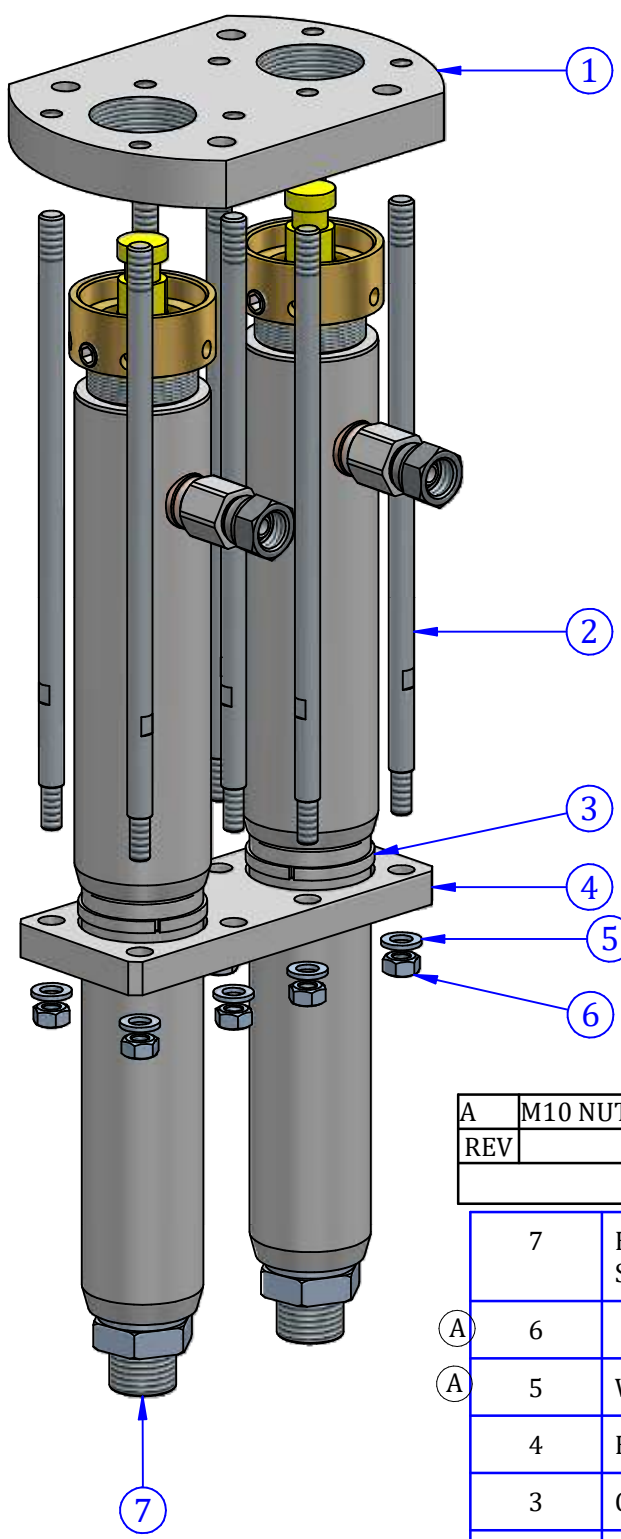
**VR COATINGS PVT.LTD.**  
 J-138, MIDC, BHOSARI, PUNE-411 026  
 INDIA

NOTE : W & T ITEMS ARE SOLD WITH SERVICE KIT ONLY.

02 081 700 01	SERVICE KIT	-	-	SET
---------------	-------------	---	---	-----

23	15 330 008 19	ALLEN BOLT(M6X30)	2	
22	15 335 008 19	ALLEN BOLT M6X35	4	
21	02 081 021 57	MID BLOCK GASKET	2	Y
20	02 081 022 57	MID BLOCK GASKET	2	Y
19	02 081 001 00	SIDE BLOCK ASSEMBLY	1	
18	15 345 008 19	ALLEN BOLT (M6X45)	4	
17	02 081 023 57	MID BLOCK GASKET	2	Y
16	02 080 021 22	PIN Ø3 X 5	1	Y
15	02 081 042 57	BOTTOM GASKET	1	Y
14	02 081 003 00	SLIDER ASSEMBLY	1	Y
13	02 081 026 57	MID BLOCK GASKET	2	Y
12	02 081 029 02	BOTTOM BLOCK	1	
11	02 081 025 57	MID BLOCK GASKET	2	Y
10	02 081 036 00	SILENCER ASSLY (TIGER)	1	
9	15 370 008 19	ALLEN BOLT(M6x70L)	1	
8	15 360 008 19	ALLEN BOLT (M6X60)	1	
7	02 081 031 02	TIGER CB CAP	1	
6	20 043 000 00	AIR SAFETY VALVE 1/4"	1	
5	19 002 001 19	WASHER 1/4" ID	1	
4	02 081 044 00	MIDDLE BLOCK ASM.	1	
3	02 081 043 57	TOP GASKET	1	Y
2	02 081 027 02	TOP BLOCK	1	
1	15 320 008 19	ALLEN BOLT M6X20	4	
SR NOS.	PART NO.	PART NAME	QTY.	W & T

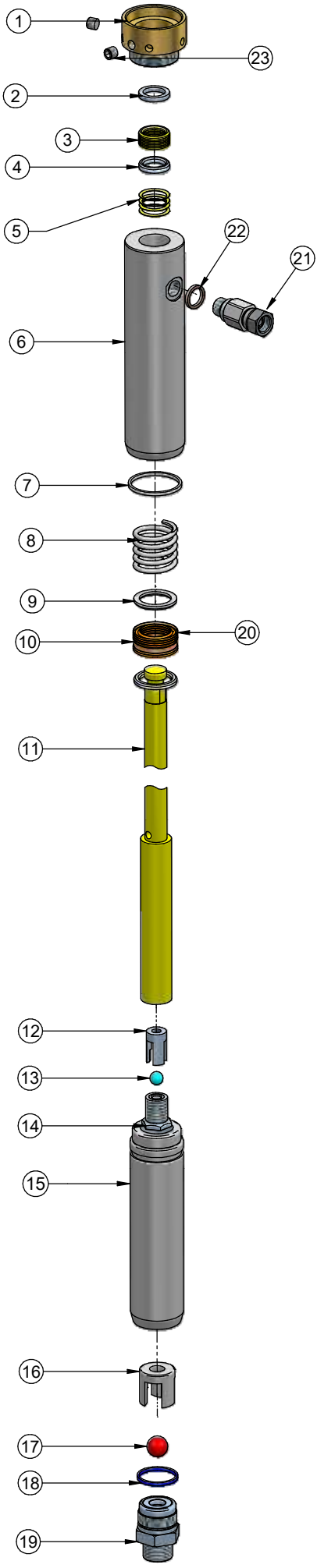
PART NAME.	<b>CONTROL BLOCK</b>	PG
PART NO.	<b>02 081 000 01</b>	1



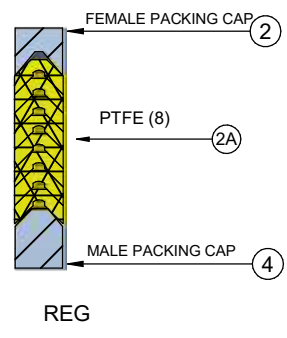
A	M10 NUT & WASHER REPLACED BY M8	28/03/2021	
REV	DESCRIPTION	DATE	SIGN
<b>AMMENDMENT</b>			

7	HYDRAULIC PART 70 S120 FOR 2K	17 019 107 00	2	
(A) 6	NYLOCK NUT M8	15 210 009 19	8	
(A) 5	WASHER M8	19 002 009 19	8	
4	HOLD PLATE	17 019 138 07	1	
3	CUT RING	17 079 004 17	2	
2	TIE ROD	17 019 112 17	8	
1	MOUNTING PLATE	17 019 129 17	1	
<b>SR.NO.</b>	<b>PART NAME</b>	<b>PART NO.</b>	<b>QTY</b>	<b>W &amp; T</b>

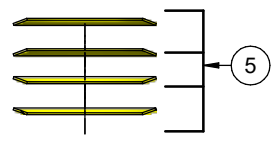
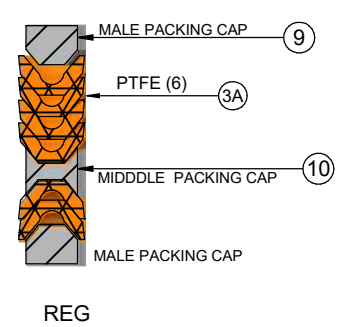
COPY OF DWG ISSUED TO:		DATE:	
MATERIAL DESCRIPTION		NOTE / REFERENCE DWG NO:	
AREA IN SQ mm	SPECIAL PROCESS:		
WEIGHT IN KGS 0.000 kg			ALL DIMN. ARE IN MM UNLESS OTHERWISE STATED. FOR OPEN TOLERANCE AND SURFACE ROUGHNESS SEE STANDARD CHART DD-01/CH-01. REMOVE SHARP CORNERS. INCASE OF DOUBT ASK.
RAW MATERIAL	SURFACE PROTECTION AS PER QUALITY MANUAL (QC-01/QP-02)		
VR COATINGS PVT.LTD.		DRN. CKD. APPD.	PART NAME. <b>HYD. 70X2</b>
J-138, MIDC, BHOSARI, PUNE-411 026 INDIA		SIGN AMOL ALBERT RICHARD SCALE NTS	PART NO. <b>17 019 136 00</b>
			PG <b>1</b>



**UPPER PACKING SET**



**LOWER PACKING SET**



SEQUENCE OF DISC SPRING

UPPER PACKING SET		
UPPER PACKING SET (REG)	PTFE (8)	04 070 069 00

LOWER PACKING SET		
LOWER PACKING SET (REG)	PTFE(6)	04 070 046 00

UPPER PACKING SET		
S.NO.	PART NAME	PART NO.
2A	PACKING RING (PTFE)	04 070 029 21

LOWER PACKING SET		
S.NO.	PART NAME	PART NO.
3A	PACKING RING (PTFE)	04 070 048 21

SR.NO.	PART NAME	PART NO.	QTY	W&T
23	GRUB SCREW M10X1.5	15 608 014 07	2	
22	WASHER 3/8" BSP	19 002 002 04	1	
21	SWIVEL CONNECTOR NRV 3/8"	04 040 076 00	1	
20	LOWER PACKING SET	04 070 046 00	1	Y
19	SUCTION SEAT ASSEMBLY	74 040 001 00	1	
18	PACKING RING	74 040 009 21	1	Y
17	BALL Ø19 MM	33 275 031 19	1	Y
16	BALL GUIDE	74 040 002 19	1	
15	BOTTOM CYLINDER	17 019 109 19.	1	
14	PISTON SEAT	04 070 063 00	1	
13	T.C. BALL 12	04 070 016 05	1	
12	BALL GUIDE	04 070 057 19	1	
11	PISTON ROD	04 070 050 19	1	
10	MIDDLE PACKING CAP	04 070 044 19	1	
9	MALE PACKING CAP	04 070 045 19	2	
8	SPRING	04 070 047 19	1	
7	PACKING RING	17 079 009 21	1	
6	TOP CYLINDER	17 019 108 19	1	
5	UPPER DISC SPRING	04 070 069 19	4	Y
4	MALE PACKING CAP	04 070 005 19	1	
3	UPPER PACKING SET	04 070 069 00	1	Y
2	FEMALE PACKING CAP	04 070 003 19	1	
1	OIL CUP BODY	04 070 055 17	1	

RAW MATERIAL DESCRIPTION		NOTE:	
SIZE		ALL DIMN. ARE IN MM UNLESS OTHERWISE STATED. FOR OPEN TOLERANCE AND SURFACE ROUGHNESS SEE STANDARD CHART DD-01/CH-01. REMOVE SHARP CORNERS. IN CASE OF DOUBT ASK.	
LENGTH			
MAT.	ASSEMBLY		
VR COATINGS PVT. LTD. J-138, MIDC, BHOSARI, PUNE-411 026 INDIA		DRN. CKD. APPD. SIGN. DNATH. RAJIV. NVD. PART NAME DATE PART NO.	HYDRAULIC PART 70CC S120 17 019 107 00
		SCALE: NOT TO SCALE	