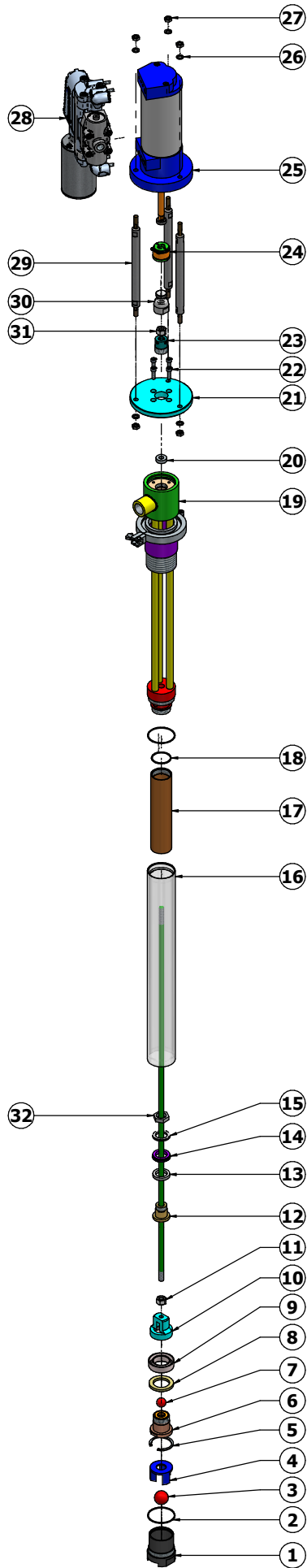


32	29 003 091 21	BUSH	1	Y
31	48 031 082 00	OIL CUP COVER	1	
30	29 003 047 19	INTRENAL CIRCLIP B45	1	
29	09 001 000 00(NEW)	COUPLING ASSEMBLY	1	
28	29 003 049 19	CONNECTING ROD	1	
27	02 081 000 01	CONTROL BLOCK	1	
26	01 080 000 03	AIR MOTOR D80 S120	1	
25	29 003 069 19	TIE ROD	3	
24	29 003 008 17	CUP NUT	1	
23	15 320 008 07	ALLEN BOLT M6X20	4	
22	15 210 009 07	NUT (M8)	6	
21	29 003 050 07	WASHAR M8	6	
20	29 003 067 01	FLANGE	1	
19	29 003 041 00	OUTLET HOUSING ASSEMBLY	1	
18	29 003 020 21	PACKING RING	1	Y
17	29 003 010 19	CYLINDER INNER	1	
16	29 003 009 19	CYLINDER OUTER	1	
15	29 003 029 19	LOCK NUT	1	
14	29 003 031 21	SEAL WASHER	1	Y
13	29 003 026 21	SEAL UPPER	1	Y
12	29 003 028 19	SEAL WASHER	1	
11	15 110 014 19	NUT M10	1	
10	29 003 045 00	SHAFT	1	
9	29 003 021 19	PISTON HOLDER	1	
8	29 003 025 21	SEAL	1	Y
7	29 003 024 19	SEAT WASHAR	1	
6	33 275 031 19	BALL ϕ 19 MM	1	
5	29 003 039 00	SEAT HOLDER	1	
4	29 003 036 19	BALL GUIDE 28	1	
3	04 070 013 19	BALL ϕ 28 MM	1	
2	29 003 019 21	PACKING RING	2	Y
1	29 003 040 00	SUCTION SEAT	1	
SR.NO.	PART NUMBER	PART NAME	QTY.	W&T

BILL OF MATERIAL

RAW MATERIAL DESCRIPTION		NOTE:																				
SIZE		ALL DIMN. ARE IN MM UNLESS OTHERWISE STATED. FOR OPEN TOLERANCE AND SURFACE ROUGHNESS SEE STANDARD CHART DD-01/CH-01. REMOVE SHARP CORNERS. IN CASE OF DOUBT ASK.																				
LENGTH																						
MAT.																						
VR COATINGS PVT. LTD. J-138, MIDC, BHOSARI PUNE-411 026 INDIA		<table border="1"> <tr> <td>DRN.</td> <td>CKD.</td> <td>APPD.</td> <td>PART NAME</td> <td>ISOCYANATE DRUM PUMP 4:1</td> </tr> <tr> <td>SIGN.</td> <td>ANIL</td> <td>ALBERT</td> <td>NVD</td> <td></td> </tr> <tr> <td>DATE</td> <td></td> <td></td> <td>PART NO.</td> <td>32 004 230 03</td> </tr> <tr> <td colspan="3">SCALE</td> <td colspan="2">NOT TO SCALE</td> </tr> </table>	DRN.	CKD.	APPD.	PART NAME	ISOCYANATE DRUM PUMP 4:1	SIGN.	ANIL	ALBERT	NVD		DATE			PART NO.	32 004 230 03	SCALE			NOT TO SCALE	
DRN.	CKD.	APPD.	PART NAME	ISOCYANATE DRUM PUMP 4:1																		
SIGN.	ANIL	ALBERT	NVD																			
DATE			PART NO.	32 004 230 03																		
SCALE			NOT TO SCALE																			



32	29 003 029 19	LOCK NUT	1	-
31	15 110 014 07	NUT M10	1	-
30	29 003 049 19	CONNECTING ROD	1	-
29	29 003 088 00	TIE ROD ASSEMBLY	3	-
28	02 081 000 01	CONTROL BLOCK	1	-
27	15 210 009 07	NUT (M8)	6	-
26	29 003 050 07	WASHAR M8	6	-
25	01 060 000 01	AIR MOTOR DIA60 S120	1	-
24	09 001 000 00	COUPLING ASSEMBLY	1	-
23	29 003 008 17	CUP NUT	1	-
22	15 320 008 07	ALLEN BOLT M6X20	4	-
21	29 003 067 01	FLANGE	1	-
20	29 003 091 21	BUSH	1	-
19	29 003 041 00	OUTLET HOUSING ASSEMBLY	1	-
18	29 003 020 21	PACKING RING	1	Y
17	29 003 010 19	CYLINDER INNER	1	-
16	29 003 009 19	CYLINDER OUTER	1	-
15	29 003 031 21	SEAL WASHER	1	Y
14	29 003 026 21	SEAL UPPER	1	Y
13	29 003 028 19	SEAL WASHAR	1	-
12	29 003 045 00	SHAFT	1	-
11	15 110 014 19	NUT M10	1	-
10	29 003 021 19	PISTON HOLDER	1	-
9	29 003 025 21	SEAL	1	Y
8	29 003 024 19	SEAT WASHAR	1	-
7	33 275 031 19	BALL Ø19 MM	1	-
6	29 003 039 00	SEAT HOLDER	1	-
5	29 003 047 19	INTRENAL CIRCLIP B45	1	-
4	29 003 036 19	BALL GUIDE 28	1	-
3	04 070 013 19	BALL Ø28 MM	1	Y
2	29 003 019 21	PACKING RING	2	Y
1	29 003 040 00	SUCTION SEAT	1	-
*	29 003 700 01	SERVICE KIT	-	SET
SR. NO.	PART NUMBER	PART NAME	QTY.	W & T

RAW MATERIAL DESCRIPTION		NOTE:		
SIZE		ALL DIMN. ARE IN MM UNLESS OTHERWISE STATED. FOR OPEN TOLERANCE AND SURFACE ROUGHNESS SEE STANDARD CHART DD-01/CH-01. REMOVE SHARP CORNERS. INCASE OF DOUBT ASK.		
LENGTH				
MAT.	Assembly			
VR COATINGS PVT.LTD. J-138, MIDC, BHOSARI, PUNE-411 026 INDIA		DRN. CKD. APPD. ANIL ALBERT NVD	PART NAME	BARREL PUMP 2.5:1
		DATE	PART NO.	29 003 000 01
		SCALE	NOT TO SCALE	